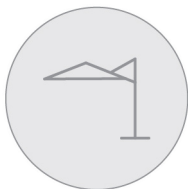


# Forte 300

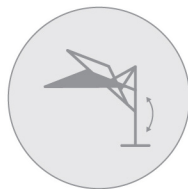
The Forte 300 umbrella combines technical intelligence and top-quality materials. The Olefin fabric shade is kept taut by a durable powder-coated aluminium frame. Turn and adjust the height for all day shade.



## Key Features



Free pole



Tilt in height



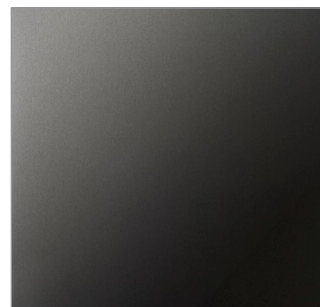
360° Rotation



120kg base

## Colour Options

### FRAME

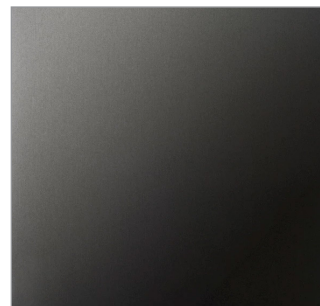


Powder Coated

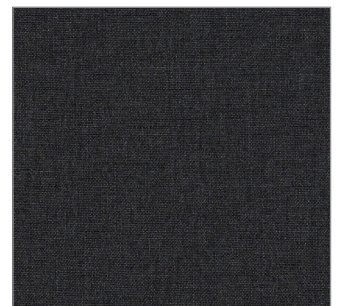
### SHADE



Taupe



Powder Coated



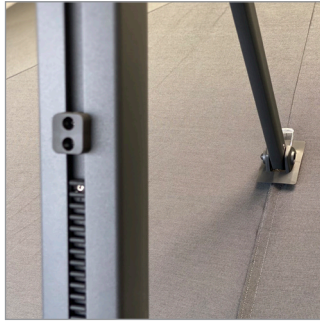
Charcoal

For more information please see one of our sales consultants or visit [mcw.nz](http://mcw.nz)

## Construction

### FRAME

Free pole umbrella with crank handle  
Slider to open, close, and tilt  
Pole & ribs are aluminium powder coated



### SHADE

Olefin (synthetic) fabric  
Water resistant  
UV and Fade resistant  
Removable and recyclable

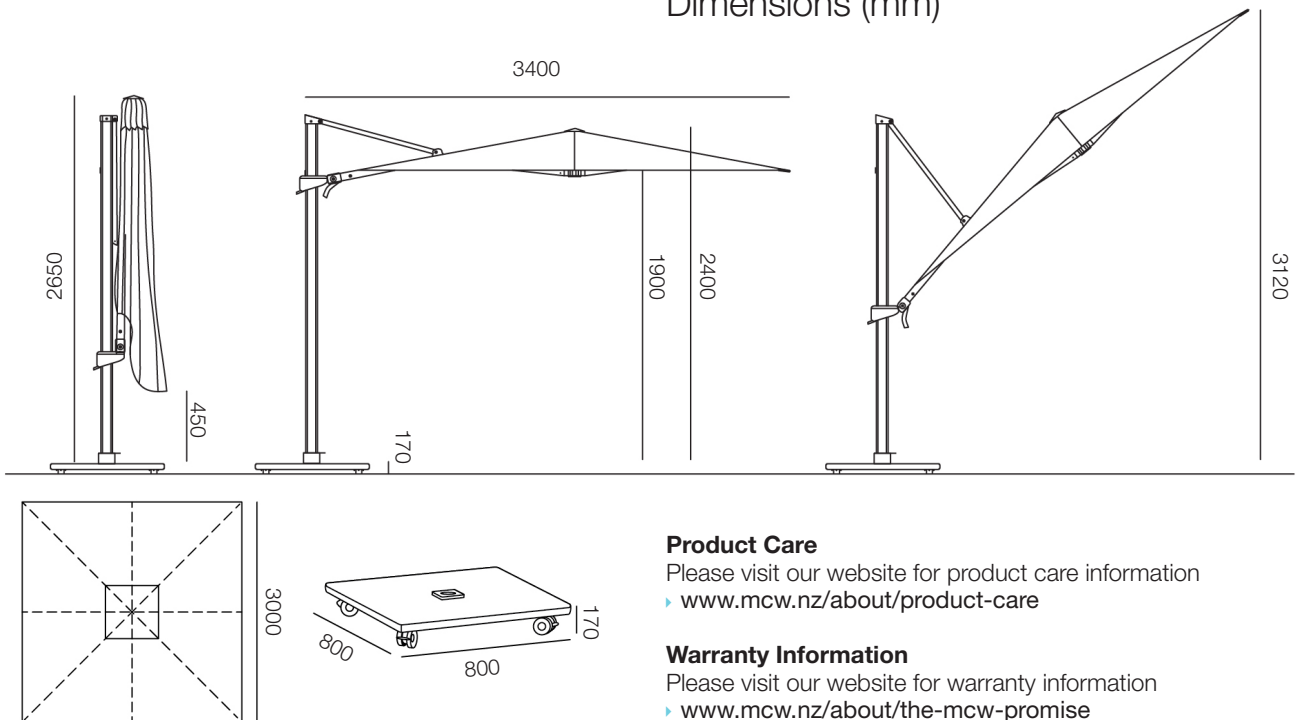


### BASE

120kg granite base  
Four swivel wheels that rotate 360°, with brakes



## Dimensions (mm)



### Product Care

Please visit our website for product care information  
▶ [www.mcw.nz/about/product-care](http://www.mcw.nz/about/product-care)

### Warranty Information

Please visit our website for warranty information  
▶ [www.mcw.nz/about/the-mcw-promise](http://www.mcw.nz/about/the-mcw-promise)

For more information please see one of our sales consultants or visit [mcw.nz](http://mcw.nz)